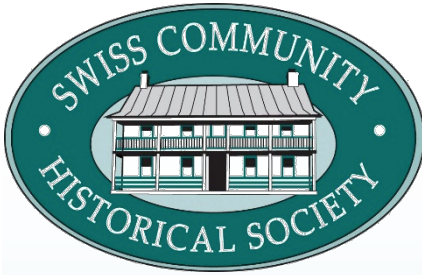


Christmas 2017



of Bluffton & Pandora
P.O. Box 5
Bluffton, OH 45817

Schumacher Homestead
8350 Bixel Rd.

BOARD OF DIRECTORS

PRESIDENT
Gary Wetherill

VICE PRESIDENT
Judith Kingsley

SECRETARY
Todd Rainey

CURATOR
Keith Sommer

Jeff Althaus
Seth Bixel
Dale Bridenbaugh
Marvin Diller
Rachael Hermiller
Ron Lora
Joanne Niswander
Kaye Phillips
Paula Scott

MEMBERSHIP

Annual Household - \$30
Annual Sustaining - \$100
Life - \$1,000

Mailing labels show your current standing. Mail checks for dues and donations to Marvin Diller at P.O. Box 5, Bluffton, OH 45817.

EDITOR: Paula Scott

newsletter

Following the sunny, boisterous fun of Fall Fest, our Christmas Open House at the Schumacher Homestead is quite a transformation. Acoustic music, natural decorations, candles, and firelight create a thoughtful, peaceful atmosphere.

Christmas Open House At the Homestead

**2-7 p.m., December 2
8350 Bixel Rd., Bluffton, Ohio**

This event includes music performed in the parlor, including dulcimer, guitar, and string ensembles.

Refreshments will be served and activities for children will be provided in the cellar.

Demonstrations of period woodworking tools will be given in the workshop.

Please join us for this glimpse into the lives of our ancestors.



scrap artists donate \$1,000

The Bluffton Scrap Artist Quilters are a familiar sight at the homestead during our annual fall festival. They add wonderful color and activity to the event. The quilters' talents are showcased in the beautiful quilts hanging on the upstairs and downstairs porch railings and in demonstrations throughout the house.

This year, the group also raffled a quilt. Members sold tickets before and during the festival.

continues next page



scrap artists donation cont.

The group even added to the raffle profits and presented a check totaling \$1,000.000 to the historical society.

We thank the quilters for their partnership and generosity!



new acquisitions

William R. (Bill) Luginbuhl, of Chicago, Illinois and formerly of Bluffton, recently contributed items from the Darvin and Evelyn Luginbuhl estate in honor of the family.

Bill is son of the late Darvin and Evelyn and brother to Gregg Luginbuhl (1949-2016).

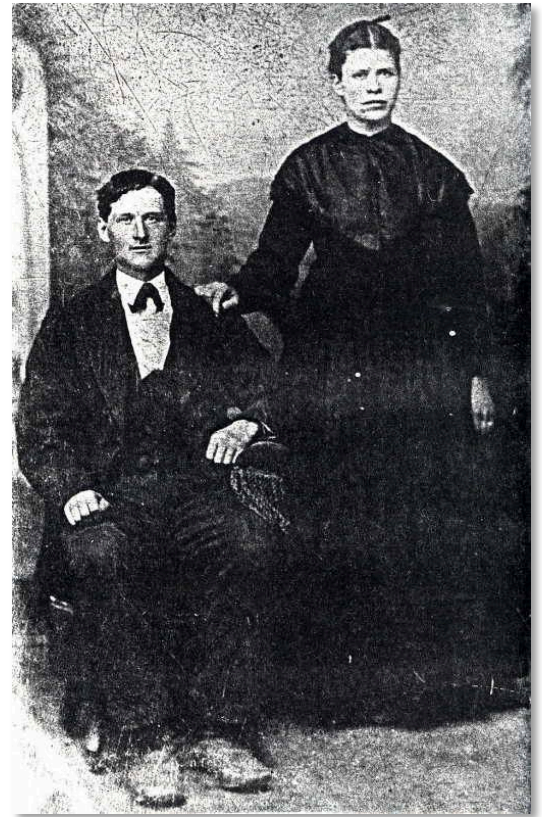
"Our Sweet Home" is a framed 18" by 22" flour sack collage. Assembled by Darvin Luginbuhl (1921-2013), it has a photo of the Bluffton Milling Company on the back.



A wagon door from Adam Steiner's wagon was also donated. It is painted black with the initials "A.S." The middle part of the door is replaced by a photograph of Steiner with his horse and wagon.

Steiner (1854-1927) lived at 10090 Putnam Rd. near Tom Fett Rd. The Steiner home and buildings are no longer standing at this address. Adam Steiner was the son of Johannes M. Steiner (1816-1899) and Katherine Steiner (1822-1909). Johannes and Katherine Steiner both emigrated from the Alsace region in France.

Adam married Anna Spallinger (1854-1933), both having been born in Richland Township. Adam and Anna had many children, one of whom was Fanny Steiner Luginbuhl (1885-1980), who married William B. Luginbuhl (1885-1954). They were the parents of Darwin and Marcile Luginbuhl Habegger (1915-1985).



Adam and Anna Spallinger Steiner

Adam Steiner regularly traveled to Lima, Ohio in his buggy as a fish peddler.

The story was told that Mr. Steiner would sometimes drink too much on these trips, but all ended well because the horse knew the path home.

"God Bless Our School" is a 22" x 10" embroidery sampler made by Magdalena Steiner and framed with a wooden backing. The sister of Adam Steiner, described above, she was known as "Aunt Maddie." The school referred to is most likely the Stager School of Richland Township.



donors visit Steiner corner cabinet

Donors Gretchen Steiner of Pennsylvania and Tim Steiner of Michigan honored us with a special visit to the Schumacher Homestead on October 4.

The siblings came to see the corner cabinet made by their great-uncle Gideon Steiner (1881-1953) on Road R in the Swiss Settlement. The corner cabinet, made of ash and bass woods, was originally owned by Gideon's sisters Susan and Elizabeth. Later owned by the donors' father, Fredrick Brewer Steiner, it was moved to Michigan. Gretchen moved it to New York City and in 2015 donated it to the SCHS, having it shipped at her expense.

Gretchen and Tim were very proud to see the cabinet in a place of prominence in our summer kitchen.

Swiss Community Historical Society
Christmas 2017 NEWSLETTER



Visit SCHS at www.swissmennonite.wordpress.com and on Facebook

P.O. Box 5
Bluffton, OH 45817

